

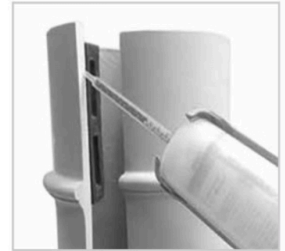


Instructions for Assembling Split-Fit™ Columns/Posts

1. Polyurethane Structural Adhesive: Use polyurethane structural adhesive like PL-Premium for reassembling the column/post halves.

CAUTION: SPLIT-FIT™ COLUMNS/POSTS ARE NO LONGER LOAD-BEARING.

2. **Cutting Precaution:** Do NOT cut the wrapping around the column/post until you have completed Step 3.
3. **Measure the Opening:** Measure the space from floor to ceiling. Cut the column/post ¼" shorter than the measured opening to ensure no weight rests on the column/post once installed. **TIP:** Always cut from the bottom of the column/post using an abrasive saw blade. After removing the column from the box, use a pencil to make several perpendicular lines along the split from top to bottom. These marks will help you realign the column.
4. **Line up:** Set the column halves in place and loosely wrap tape around the column to prevent it from falling. Then, line up the pencil marks made in Step 3.
5. **Dry Fit:** Dry fit the column/post in place to ensure proper fit and adequate space.
6. **Apply Adhesive:** Lay a bead of polyurethane structural adhesive along the edges of both halves of the column/post. **TIP:** Avoid applying adhesive to the alignment keys on either half.
7. **Wrap with Tape:** Pull the column/post halves together and use tape to hold them in place, wrapping them around 4 times at several locations. The adhesive will be squeezed out; do NOT remove the tape until cured. **TIP:** DO NOT use clamps.
8. **Excess Adhesive:** Once the adhesive has gelled, remove the excess with a putty knife or chisel. Sand until the surface is smooth and flush with the column/post.
9. **Bondo® for Seam Smoothing:** After sanding, use Bondo® to smooth out any remaining seams.
10. **Assemble Cap & Base:** Use the same adhesive procedure to assemble the cap and base. Avoid applying adhesive to alignment pins or receiver holes.
TIP: Install the cap and base only after the column/post has been installed and properly sanded.



Tools Required

Safety Glasses, Dust Mask, Gloves
Sandpaper (100-grit or sanding sponge)

Caulk Gun, Saw with Abrasive Blade
Tape Measure, Pencil, Putty Knife

Cautions

1. No Caulking: Do not caulk the base to the substrate; this can trap moisture and cause freezing.
2. Pre-Drilling: Ensure all holes are pre-drilled as necessary.
3. No Fillers: Do not put concrete or any other filler inside the column/post.
4. Waterproofing: Install flashing to prevent water from entering at the top of the column/post, particularly if exposed to the elements.

Painting Tips

- **Color Restrictions:** Avoid using dark paints with L values between 56 and 0.
- **Surface Preparation:** Sand the column/post with 100-grit sandpaper or a sanding sponge to prepare for priming.
- **Finish Coat:** Follow with an appropriate topcoat for a high-quality finish.