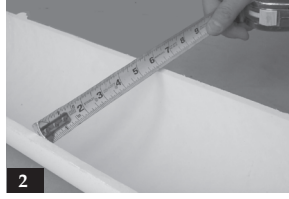
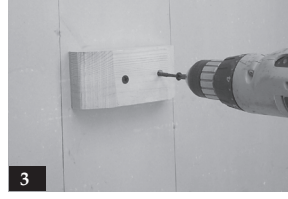




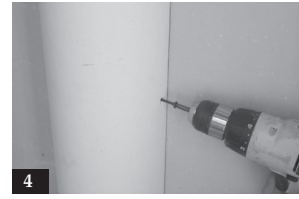
1. Determine the desired location and temporarily set the shaft into position and ensure that it is plumb. Lightly mark the outline of the split shaft.



2. Measure the wall thickness of the split column on each side and cut pieces of wood blocking to fit inside the split column.



3. Securely mount the blocking to the wall every 24" along the length of the column. Be sure to allow for the wall thickness at each position.



4. Return the column into position on the wall. Pre-drill, countersink holes and attach the shaft to the blocking with rust resistant screws. Do not over tighten the rust resistant screws or column damage may occur.



5. Apply sealant at the joint between the wall and column.

Refer to Installation of Round Fiberglass Columns for more information on capital and base installation and finishing instructions.

- ✓ Install the split base by pre-drilling holes and mounting the base to the floor with rust resistant screws.
- ✓ The split capital is installed by pre-drilling holes and mounting the split capital to the ceiling or wall with rust resistant screws.
- ✓ Fill all screw heads with automotive body filler and sand smooth.
- ✓ Apply paintable silicone sealant to the joints between the base, capital and shaft.